

Chabot College School of the Arts

Department of Theater Arts

Look Book

2nd Edition

Prepared by Stephanie M. Roach

For the Spring 2011 Production of

John Steinbeck's **The Grapes of Wrath**

Written By Frank Galati

Directed by Dov Hassan

Music direction by Dennis Chowenhill

At Home With *the Joads*

The Dust Bowl: 1931-1939

“

*...the corn was fallen sideways and the dust was piled on it. Little flints shoved through the dusty soil. The driver said... ‘A forty-acre cropper and he ain’t been **dusted out** and he ain’t been **tractored out**?’*

- John Steinbeck, *The Grapes of Wrath*, Ch. 2

8-2-1918 AD

New Dust Storms Threaten to Turn Land Into Desert

KANSAS CITY, March 26 (UP) — A second dust storm blasted region condition "dust" Gree

DUST DAMAGE SENDS FARMERS FIGHT TO STOP LOSSES BY DUST STORMS

RAIN IN TWO WEEKS, OR CROP LOSS, FARM EXPERTS ASSERT

DUST STORMS RAGE FROM KANSAS WEST FAR AS CALIFORNIA

Worst of Year in 'Nation's Bread Basket' Church Services Halted; Second in Two Days Blackens Skies at Guymon, Okla.

Sun Blotted Out at Ponca City; Haze Spreads

BLACK GALE AGAIN HOWLS IN SOUTHWEST

Storm Brings Suffering to Hard Section

Man and Beast Forced Refuge in Building

LEGISLATION NECESSARY IN FIGHTING DUST

FLYING THRU DUST BOWL WORSE THAN BUCKING BLIZZARDS, SAYS MERNDON, FAMOUS PILOT

Black Blizzard Sweeping East of New Mexico

Kansas, Oklahoma Panhandle and Northwest Tip of Texas Are Hit

Two Planes Make Forced Landings As Black Blizzard Hides Airport

Two airplanes were forced to land at an emergency field eight miles south of the municipal airport Tuesday afternoon when they were caught in a sudden dust storm that reduced the visibility at the airport to "zero."

THREE YEAR OLD BENSON BOY SURVIVES ALMOST 20 HOURS IN RAGING DUST STORM AND COLD

BOY WALKS INTO FARM EIGHT MILES FROM HIS HOME WHILE 500 SEARCHERS HUNT IN VAIN

Little three year old boy of Two Butte, Mont. was found by his father's arms today, after he had been missing almost 20 hours in the dust storm of Sunday afternoon and Monday morning. The boy, little Ewell Steven Benson Jr., walked Monday morning after he had been missing Sunday afternoon.

PRAIRIE CENTER TO PRAY FOR MOISTURE

Dust-Bowl Community Says Plea Was Answered Last Year, to Try Again

VICTIM OF DUST STORM RELEASED FROM HOSPITAL

Man who was hospitalized for several days after being struck by a dust storm is now home.

EVSTWVN—SPELT—KODAK



Baca County, Colorado, 1936



APRIL 5 - 1935



Photo by Dorothea Lange. Dust storm near Mills, New Mexico. May 1935. Library of Congress Reproduction No. LC-USF344-003788-ZB DLC

RA 1012 S-10 E



Photo by J. H. Ward. Baca County, Colorado. April 14, 1935. Dust storm. Library of Congress
Reproduction No. LC-USZ62-47982 DLC



E - S - EAST

Photo by J. H. Ward. Dust storm. Colorado, Ca. 1936. Library of Congress Reproduction No. LC-USZ62-47983 DLC

RA 1014 S-5



69

Photo by J. H. Ward. Dust storm. Baca County, Colorado. 1935. Library of Congress Reproduction No. LC-USZ62-36846 DLC



Dust storm. Elkhart, Kansas. May 21, 1937. Library of Congress Reproduction No. LC-USF34-014753 DLC



JA 4022-E

Photo by Arthur Rothstein. Dust storm. Amarillo, Texas. April 1936. Library of Congress Reproduction No. LC-DIG-fsa-8b27554 DLC



Farmer and sons walking in the face of a dust storm. Cimarron County, Oklahoma. April 1936. Library of Congress Reproduction No. LC-DIG-ppmsc-00241 DLC



Photo by Arthur Rothstein. Dust is too much for this farmer's son in Cimarron County, Oklahoma. April 1936.
Library of Congress Reproduction No. LC-DIG-fsa-8b38283 DLC



135430

Photo by Dorothea Lange. Dust storm. It was conditions of this sort which forced many farmers to abandon the area. Spring 1935. New Mexico. April 1935. Library of Congress Reproduction No. LC-DIG-fsa-8b27355 DLC



Photo by Arthur Rothstein. Fighting the drought and dust with irrigation. Cimarron County, Oklahoma. April 1936. Library of Congress Reproduction No. LC-USF34-004109-E DLC



3-1204 AF

Photo by Arthur Rothstein. Dust bowl farmer raising fence to keep it from being buried under drifting sand. Cimarron County, Oklahoma. April 1936. Library of Congress Reproduction No. LC-USZ62-131312 DLC



FF-2504-411

Photo by Arthur Rothstein. Buried farm implements. Cimarron County, Oklahoma. April 1936. Library of Congress
Reproduction No. LC-USF34-004076-E DLC



E 1204 AT

Photo by Arthur Rothstein. An abandoned farm. Cimarron County, Oklahoma. April 1936. Library of Congress Reproduction No. LC-USF346-004091-E DLC

Cimarron county, Okla. Apr 1936. Plow covered by sand.

US DEPT. AGRIC. FARM SECURITY ADMIN

LC-USF 34-
Negative No. 4043-E

PHOTO BY Arthur Rothstein

LC-USF 34-4043 E



Photo by Arthur Rothstein. Plow covered by sand. Cimarron County, Oklahoma. April 1936. Library of Congress Reproduction No. LC-DIG-ppmsca-09316 DLC



E-3204 AT7

Photo by Arthur Rothstein. Chickens take shelter from sand. Cimarron County, Oklahoma. April 1936. Library of Congress Reproduction No. LC-USF34-004053-E DLC



Photo by Arthur Rothstein. Dust storm damage. Cimarron County, Oklahoma. April 1936. Library of Congress Reproduction No. LC-USZ62-131557 DLC



Photo by Arthur Rothstein. One of the pioneer women of the Oklahoma Panhandle dust bowl. April 1936.
Library of Congress Reproduction No. LC-USF34-004029-E DLC



Photo by Arthur Rothstein. Sand piled up in front of outhouse on farm. Cimarron County, Oklahoma.
April 1936. Library of Congress Reproduction No. LC-DIG-fsa-8b38341 DLC



74058 AR

Photo by Arthur Rothstein. Soil blown by dust bowl winds piled up in large drifts near Liberal, Kansas. March 1936. Library of Congress Reproduction No. LC-USF34-002504-E DLC



Photo by Arthur Rothstein. Son of farmer in dust bowl area. Cimarron County, Oklahoma. April 1936.
Library of Congress Reproduction No. LC-DIG-fsa-8b38282 DLC



Photo by Arthur Rothstein. Stock watering hole almost completely covered by shifting topsoil. Cimarron County, Oklahoma. April 1936. Library of Congress Reproduction No. LC-DIG-fsa-8b38284 DLC



Photo by Arthur Rothstein. The winds of the dust bowl have piled up large drifts of soil against this farmer's barn near Liberal, Kansas. March 1936. Library of Congress Reproduction No. LC-USF34-002505-E D1 C



21940-0

Photo by M. P. Wolcott. Storm pit, shelter built and used by many families in Alabama during storms or high winds. Coffee County, Alabama. April 1939. Library of Congress Reproduction No. LC-USF34-

051470-D D I C

TOPPS AR



Photo by Arthur Rothstein. Removing drifts of soil which block the highways near Guymon, Oklahoma. March 1936. Library of Congress
Reproduction No. LC-USF34-002490-D DLC



Photo by Arthur Rothstein. View of a badly blown area in Cimarron County, Oklahoma. April 1936.
Library of Congress Reproduction No. LC-USF34-004040-E DLC



Photo by Dorothea Lange. Power farming displaces tenants...Texas Panhandle. 1938. Library of Congress Reproduction No. LC-USF34-T01-018281-C DLC

182881



Photo by Dorothea Lange. Dust bowl farmer driving tractor with young son near Cland, New Mexico. June 1938. Library of Congress
Reproduction No. LC-DIG-fsa-8b32410 DLC



Photo by Dorothea Lange. Dust bowl farmer with tractor and young son near Cland, New Mexico. June 1938. Library of Congress Reproduction No. LC-USZ62-131495 DLC



Photo by Russell Lee. Mr. Bosley of the reorganization unit standing in a field of sudan grass on his farm in Baca County, Colorado. Sudan grass is a cover crop. September 1939. Library of Congress Reproduction No. LC-USF34-



Photo by Russell Lee: Father and son. Bertelson family, Antelope, Montana. November 1937 . Library of Congress Reproduction No. LC-USF34-030952-D DLC



Photo by Russell Lee. Child of John Harshenberger. Sheridan County, Montana. November 1937. Library of Congress Reproduction No. LC-USF34-030925-D DLC



30d1d-D

Photo by Russell Lee. Children of John Harshenberger, Mennonite farmer. Sheridan County, Montana. November 1937 . Library of Congress Reproduction No. LC-USF34-030919-D DLC



Photo by Russell Lee. Children of the drought area in farm home of aunt. Sheridan County, Montana. November 1937. Library of Congress Reproduction No. LC-USF34-030949-D DLC



Photo by Russell Lee. Children taking bath in their home in community camp. Oklahoma City, Oklahoma. 1939. Library of Congress Reproduction No. LC-USF34-034005-D DLC



Photo by J. Delano. Mr. and Mrs. Andrew Lyman...Windsor Locks,
Connecticut.. Library of Congress Reproduction No. LC-DIG-ppmsc-00255
DLC

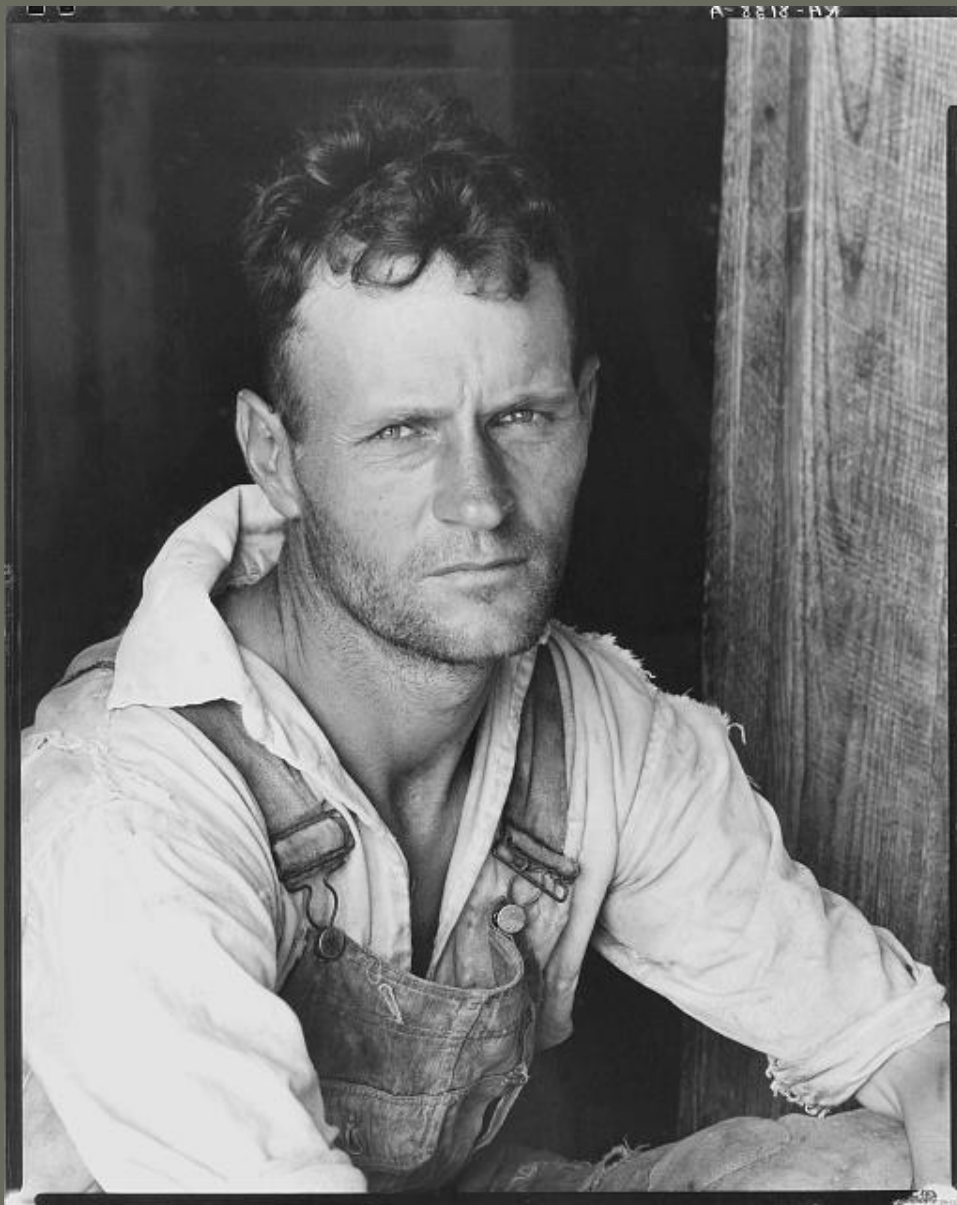


Photo by W. Evans. Floyd Burroughs...Hale County, Alabama. 1935 or 1936.
Library of Congress Reproduction No. LC-DIG-ppmsc-00244 DLC



Photo by W. Evans. Bud Fields and his family...Alabama. 1935 or 1936. Library of Congress Reproduction No. LC-DIG-ppmc-00234 DLC



Photo by John Vachon. Watching parade, Omaha, Nebraska. November 1938. Library of Congress
Reproduction No. LC-USF33-T01-001306-M1 DLC



Photo by G. Parks. Washington, D. C. Government charwoman. 1942. Library of Congress Reproduction No. LC-DIG-fsa-8b14845 DLC



Photo by Dorothea Lange. Negro sharecropper and wife. Mississippi. 1937.
Library of Congress Reproduction No. LC-USZ62-106936 DLC



Photo by Ben Shahn. Colored mother and child, Little Rock, Arkansas. October 1935. Library of Congress Reproduction No. LC-USF3301-006023-M5 DLC



Photo by Arthur Rothstein. Sharecroppers children. September 1935. Library of Congress Reproduction No. LC-USZ62-108099 DLC



Photo by Ben Shahn. Children of sharecroppers. Little Rock, Arkansas. October 1935. Library of Congress Reproduction No. LC-USF3301-006025-M3 DLC

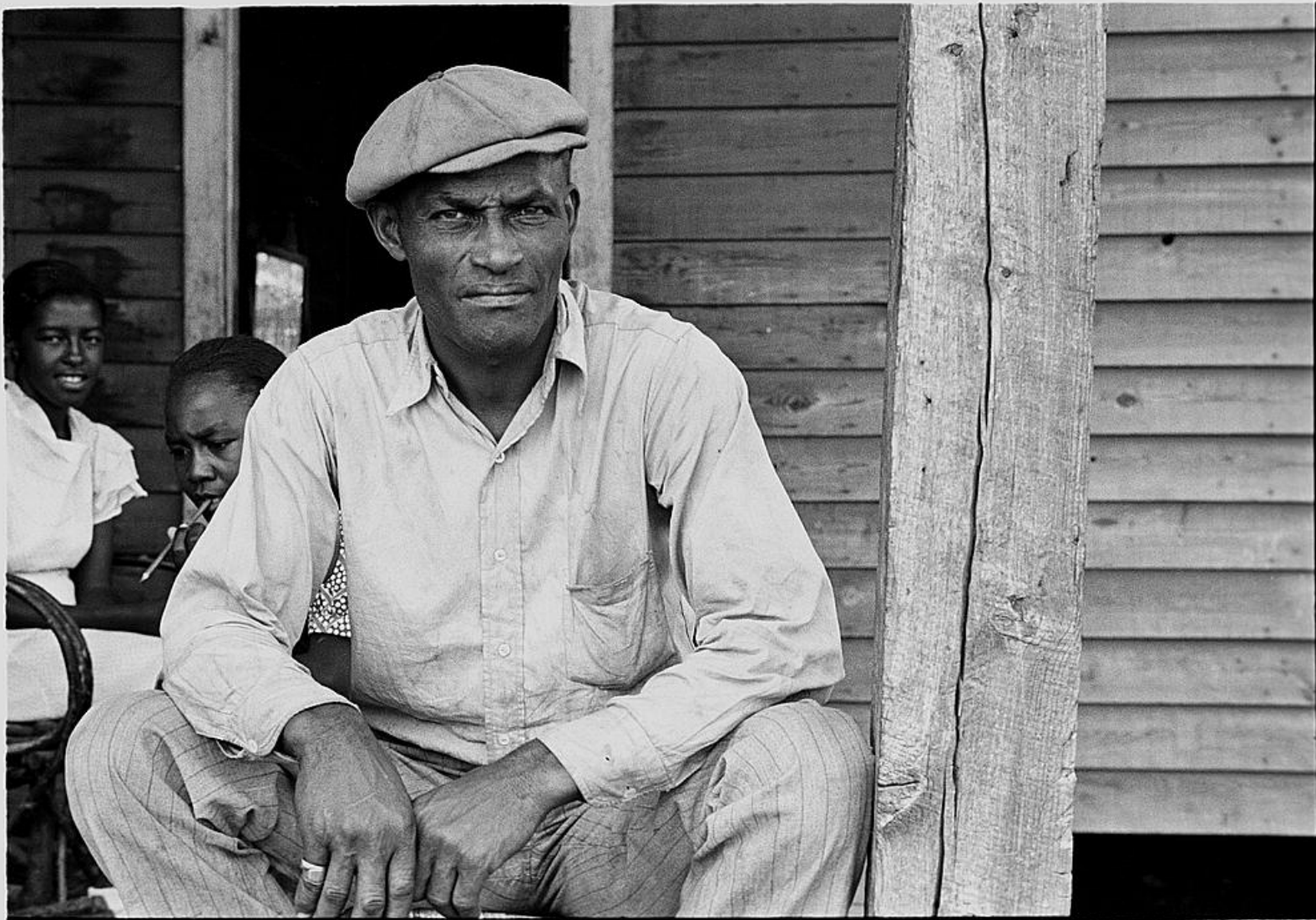


Photo by Ben Shahn. Sharecropper on Sunday. Little Rock, Arkansas. October 1935. Library of Congress Reproduction No. LC-DIG-fsa-8a16179 DLC



Photo by Ben Shahn. Children of sharecropper, Little Rock, Arkansas. October 1935. Library of Congress Reproduction No. LC-DIG-fsa-8a16181 DLC

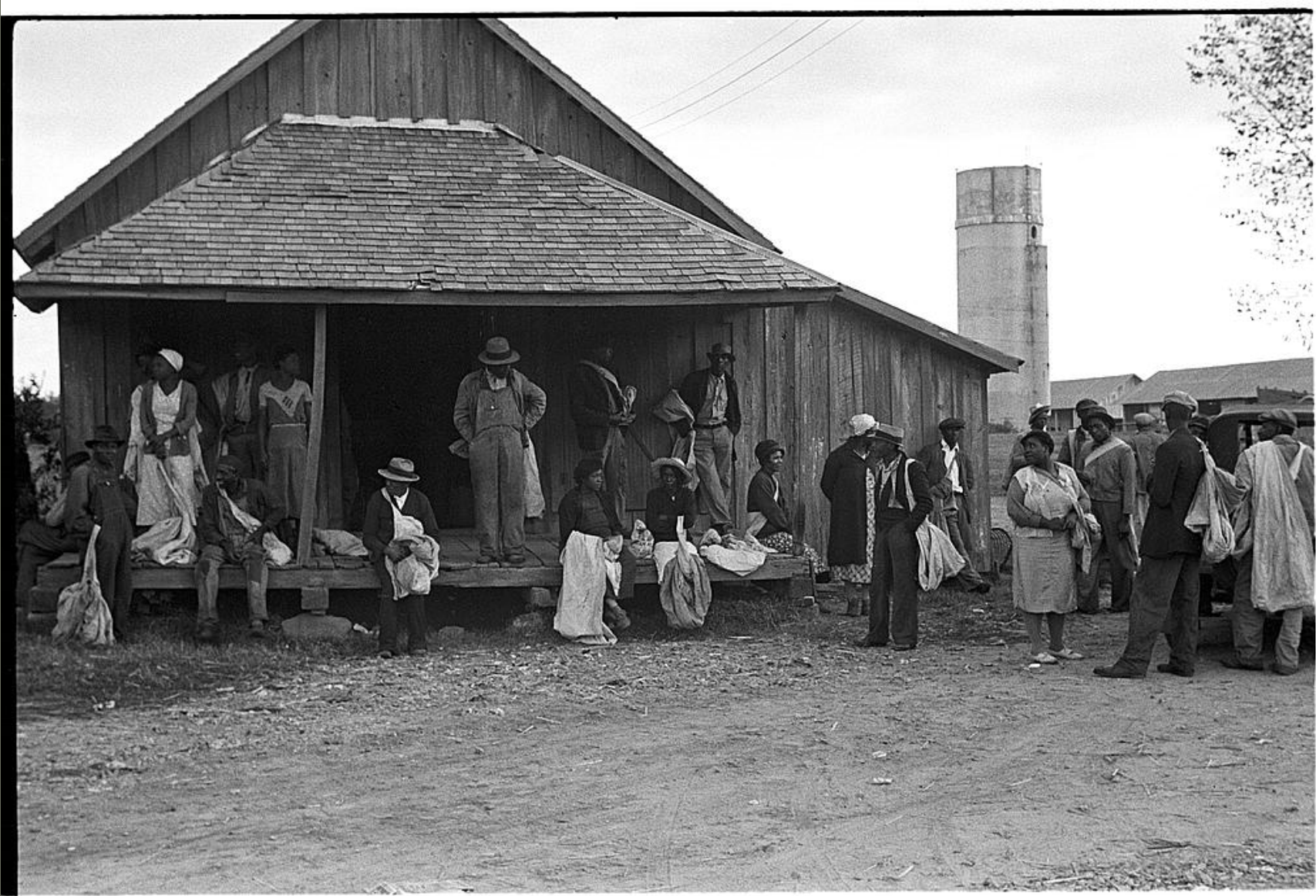


Photo by Ben Shahn. Cotton pickers. Arkansas. October 1935. Library of Congress Reproduction No. LC-DIG-fsa-8a16196 DLC



Photo by Arthur Rothstein. Loading bananas. Mobile, Alabama. 1937. Library of Congress Reproduction No. LC-USF34-025466-D DLC

On the Road With *the Joads*

Route 66

“

*...along the highway the cars of the migrant people **crawled out like bugs**, and the narrow concrete miles stretched ahead.”*

- John Steinbeck, The Grapes of Wrath, Ch. 17

18150-C



Photo by Dorothea Lange. The highway going West. U.S. 80 near Lordsburg, New Mexico. . 1938.
Library of Congress Reproduction No. LC-DIG-fsa-8b32328 DLC



Photo by Dorothea Lange. Between Tulare and Fresno on U.S. 99. Farmer from Independence, Kansas, on the road at cotton chopping time. He and his family have been on the road for 6 months. May 1939. Library of Congress Reproduction No. LC-DIG-fsa-8b33667 DI C.

AS 14533 E



Photo by Dorothea Lange. Child of Texas migrant family who follow the cotton crop. June 1937. Library of Congress Reproduction No. LC-USF34-017238-E DLC



Photo by Dorothea Lange. Drought refugees. California. February 1936. Library of Congress Reproduction No. LC-USF34-T01-001823-C DLC



Photo by Dorothea Lange. Eight related persons just arriving in this roadster from Texas. In search of employment as pea pickers. February 1939. Library of Congress Reproduction No. LC-USF34-019184-



Photo by Dorothea Lange. Family between Dallas and Austin, Texas. August 1936. Library of Congress Reproduction No. LC-DIG-fsa-8b29790 DLC



Photo by Dorothea Lange. Mother and baby of family on the road. Tulelake, Siskiyou County, California. September 1939. Library of Congress Reproduction No. LC-DIG-fsa-8b34842 DLC



34 10882-C

Photo by Dorothea Lange. Flood refugees four miles out of Memphis, Texas. June 1937. Library of Congress Reproduction No. LC-USF34-016885-C DLC



Photo by Dorothea Lange. Former Nebraska Farmer, now a migrant farm worker. Klamath County, Oregon. August 1939. Library of Congress Reproduction No. LC-USF34-020981-E DLC



Photo by Dorothea Lange. Migrant agricultural family. June 1938. Library of Congress
Reproduction No. LC-USF34-018214-E DLC



Photo by Dorothea Lange. Migrant children from Oklahoma on California Highway. March 1937. Library of Congress Reproduction No. LC-USF34-016441-E DLC



10-1377-A71

Photo by Dorothea Lange. Migrant family from Oklahoma in Texas. A family of six alongside the road. August 1936. Library of Congress Reproduction No. LC-USF34-009731-E DLC



Photo by Dorothea Lange. Migrant oil worker and family near Odessa, Texas. May 1937. Library of Congress Reproduction No. LC-USF34-016932-E DLC

RA 2455 E



Photo by Dorothea Lange. Migrant pea pickers on the road. California. February 1936. Library of Congress Reproduction No. LC-USF34-002472-E DLC



Photo by Dorothea Lange. Migratory agricultural worker family along California highway. U.S. 99. March 1937. Library of Congress Reproduction No. LC-USF34-016444-E DLC



31-0277P-A171

Photo by Dorothea Lange. Oklahoma migrant. Texas. August 1936 Library of Congress
Reproduction No. LC-USF34-009730-E DLC



Photo by Dorothea Lange. Oklahoma refugees. February 1936. Library of Congress Reproduction No. LC-USF34-T01-001820-C DLC



Photo by Dorothea Lange. Oklahomans bound for Oregon, California. February 1937. Library of Congress Reproduction No. LC-USF34-016116-C DLC



Photo by Dorothea Lange. On U.S. 99. Near Brawley, Imperial County. Homeless family of seven. February 1939. Library of Congress Reproduction No. LC-DIG-fsa-8b33132 DLC



Photo by Dorothea Lange. Professional migratory laborer camping on the outskirts of Perryton, TX, opening of wheat harvest. June 1938. Library of Congress Reproduction No. LC-USF34-018187-E DLC



Photo by Dorothea Lange. Part of family come for work in potatoes. Tule lake, Siskiyou County, California. September 1939. Library of Congress Reproduction No. LC-USF34-020971-E DLC

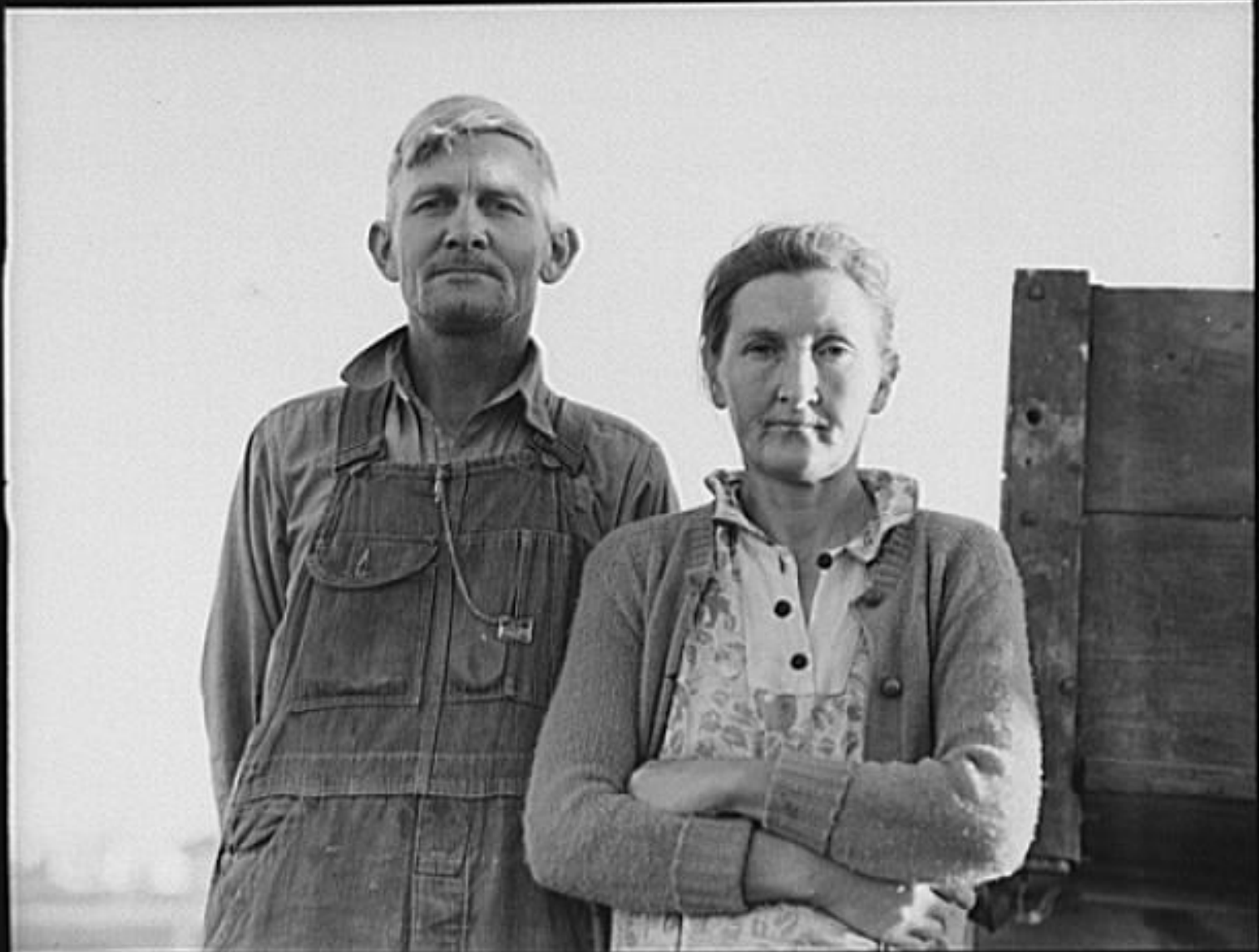


Photo by Dorothea Lange. Migratory labor workers. Brawley, Imperial Valley, California. February 1939.
Library of Congress Reproduction No. LC-USF34-019226-C DLC



Photo by Dorothea Lange. Texas family looking for work in the carrot harvest. March 1937. Library of Congress Reproduction No. LC-USF34-016121-C DLC



Photo by Dorothea Lange. Migrant agricultural workers' home. California. February 1937. Library of Congress Reproduction No. LC-USF34-016463-E DLC



Photo by Dorothea Lange. Family in auto camp. California. November 1936. Library of Congress
Reproduction No. LC-USF34-009991-C DLC

E-3999-99



Photo by Dorothea Lange. Wife of migratory worker in auto camp. California. November 1936. Library of Congress Reproduction No. LC-USF34-009993-E DLC



Photo by Russell Lee. Indians on way to the berry fields near Little Fork, Minnesota. 1937. Library of Congress Reproduction No. LC-DIG-fsa-8a21926 DLC



Photo by Arthur Rothstein. Indians at Molalla Buckaroo. Molalla, Oregon. 1936. Library of Congress
Reproduction No. LC-USF34-004965-E DLC



58368-0

Photo by Marion Post Wolcott. Indians going to Crow Agency to annual fair, Montana. 1941. Library of Congress Reproduction No. LC-USF34-058368-D DLC



Photo by Dorothea Lange. Young Negro wife cooking breakfast, outskirts of El Paso, Texas. June 1938.
Library of Congress Reproduction No. LC-DIG-fsa-8b32371 DLC



100HP-E

Photo by Dorothea Lange. One of the roads leading into Calipatria, Imperial County, California. February 1939. Library of Congress Reproduction No. LC-USF34-019046-E DLC



Photo by Dorothea Lange. Toward Los Angeles, California. 1937. Library of Congress Reproduction No. LC-DIG-fsa-8b31801 DLC



Photo by Dorothea Lange. Car on siding across tracks from pea packing plant. Twenty-five year old itinerant, originally from Oregon. February 1939. Library of Congress Reproduction No. LC-DIG-fsa-8h33263 DI C



Photo by John Vachon. Unemployed men who ride the freight trains. November 1938. Library of Congress Reproduction No. LC-USF34-T01-008859-D DLC



14733-C

Photo by Dorothea Lange. Hobo wakes up early in the morning from his bed alongside a corral. Imperial Valley, California. February 1939. Library of Congress Reproduction No. LC-USF34-019233-C DLC

California With *the Joads*

Migrant Farm Workers

“

...the great companies did not know that **the line between hunger and anger is a thin line**. And money that might have gone to wages went for gas, for guns, for agents and spies, for blacklists, for drilling. On the highway the people moved like ants and searched for work, for food.”

- John Steinbeck, *The Grapes of Wrath*, Ch. 21

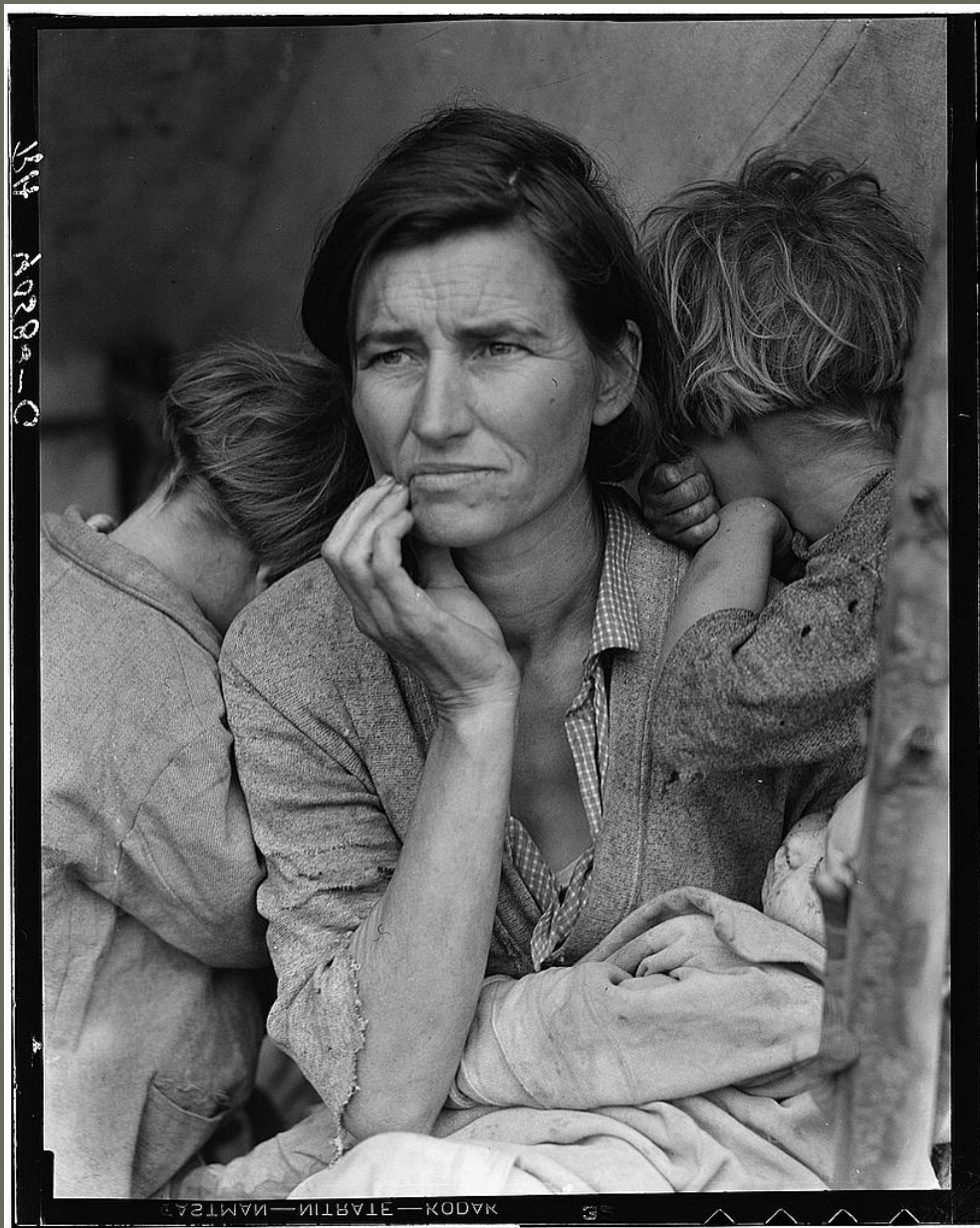


Photo by Dorothea Lange. Destitute pea pickers in California. Mother of seven children. Age thirty-two. Nipomo, California. February 1936. Library of Congress Reproduction No. LC-DIG-ppmsca-12883 DLC



Photo by Dorothea Lange. Eighteen year old mother from Oklahoma. Now a California Migrant. March 1937. Library of Congress Reproduction No. LC-USF34-T01-016269-C DLC



Photo by Dorothea Lange. Child of migratory worker. American River camp near Sacramento, California. November 1936. Library of Congress Reproduction No. LC-USF34-009911-C DLC

RA-02720-AR



Photo by Dorothea Lange. Drought refugees in migratory agricultural workers' camp. California. March 1937. Library of Congress Reproduction No. LC-USF34-016450-E DLC



Photo by Dorothea Lange. Dispossessed Arkansas farmers. Bakersfield, California. 1935. Library of Congress Reproduction No. LC-USF34-002327-C



Photo by Dorothea Lange. Drought refugees in California migrant camp. November 1936. Library of Congress Reproduction No. LC-USF34-016110-E DLC



Photo by Dorothea Lange. California State Employment Service office. Tulelake, Siskiyou County, California. September 1939. Library of Congress Reproduction No. LC-USF34-021014-C DLC



Photo by Dorothea Lange. Bndle stiff. Used to be a logger. August 1939. Library of Congress
Reproduction No. LC-USF34-020660-E DLC



Photo by Dorothea Lange. Drinking water for the whole town, also for the migrant camp across the road. Tulelake, Siskiyou County, California. September 1939. Library of Congress Reproduction No. LC-DIG-fsa-

8h34824 DI C

Q-25918



Photo by Dorothea Lange. Klamath Basin potato farmer. Tulelake, California. October 1939. Library of Congress Reproduction No. LC-DIG-fsa-8b35630 DLC

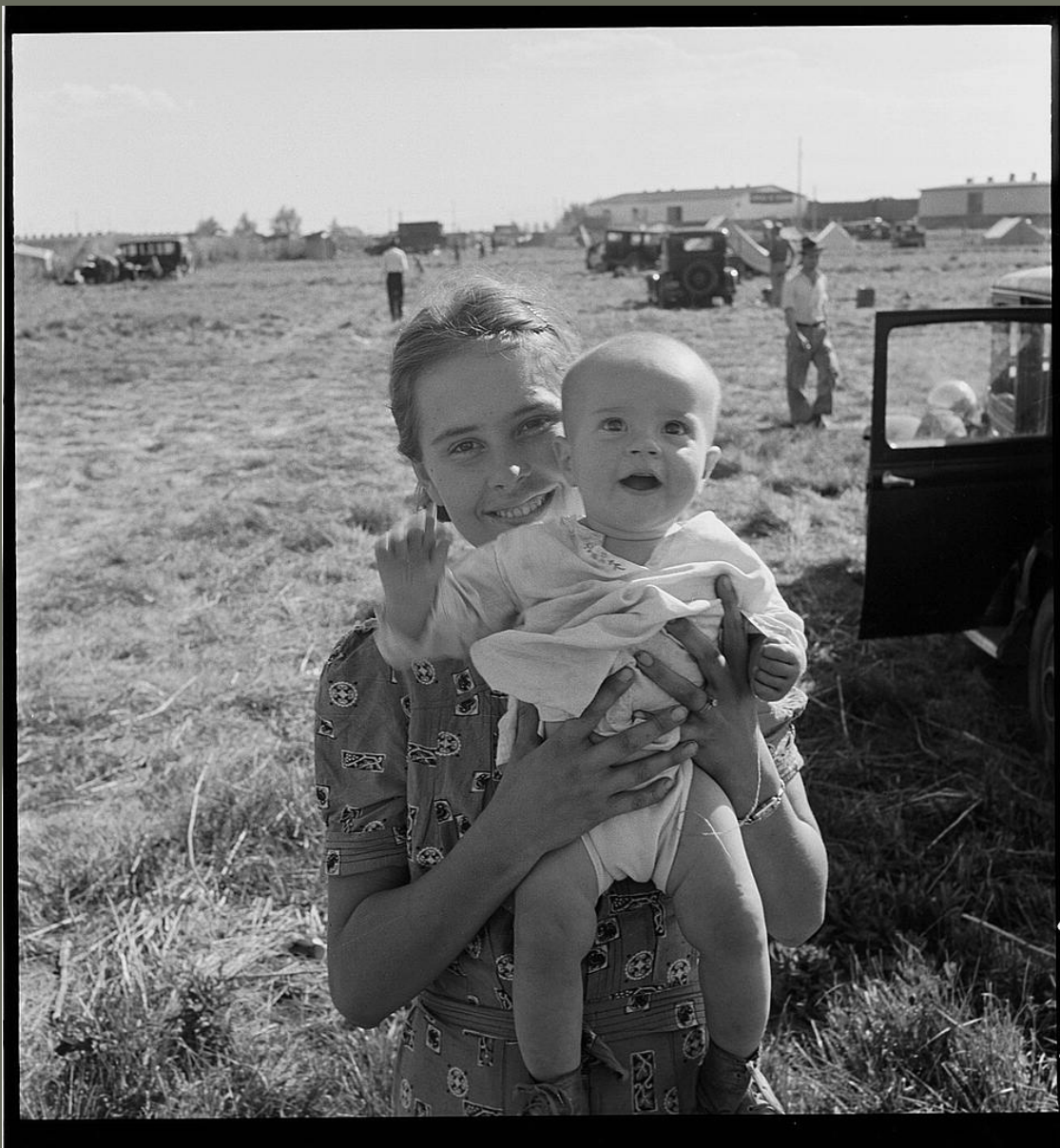


Photo by Dorothea Lange. Migrant potato pickers. Tule Lake, Siskiyou County, California.
September 1939. Library of Congress Reproduction No. LC-DIG-fsa-8b34817 DLC



Photo by Russell Lee. Malheur County, Oregon. Japanese-American girls washing celery sprouts for transplanting. 1942. Library of Congress Reproduction No. LC-USF33-013309-M2 DLC



Photo by Russell Lee. Malheur County, Oregon. Japanese-American farm worker with celery plants.
1942. Library of Congress Reproduction No. LC-USF34-073682-E DLC

73689-E



Photo by Russell LeeNyssa, Oregon. FSA (Farm Security Administration) mobile camp. Japanese-American and white farm worker. 1942.. Library of Congress Reproduction No. LC-USF34-073689-E



Photo by Russell Lee. Nyssa, Oregon. FSA (Farm Security Administration) mobile camp. Japanese-American farm worker. 1942. Library of Congress Reproduction No. LC-USF34-073690-E DLC

73 697-E



Photo by Russell Lee. Malheur County, Oregon. Japanese-Americans and white Americans working in a celery field. 1942. Library of Congress Reproduction No. LC-USF34-073697-E DLC

73702E



Photo by Russell Lee. Nyssa, Oregon. Japanese-American farm worker. 1942. Library of Congress
Reproduction No. LC-USF34-073702-E DLC



73712-E
Photo by Russell Lee. Nyssa, Oregon. FSA (Farm Security Administration) mobile camp. Japanese-American farm worker. 1942. Library of Congress Reproduction No. LC-USF34-073712-E DLC



Photo by Russell Lee. Nyssa, Oregon. FSA (Farm Security Administration) mobile camp. Japanese-American farm worker. 1942. Library of Congress Reproduction No. LC-USF34-073714-E DLC



Photo by Russell Lee. Nyssa, Oregon. FSA (Farm Security Administration) mobile camp. Japanese-American farm worker. 1942. Library of Congress Reproduction No. LC-USF34-073715-E DLC



Photo by Russell Lee. Twin Falls County, Idaho. Japanese-American farm workers weeding onions.
1942. Library of Congress Reproduction No. LC-USF34-073984-D DLC



Photo by Russell Lee. Nyssa, Oregon. FSA (Farm Security Administration) mobile camp. A Japanese-American farm worker sharpening a hoe. 1942. Library of Congress Reproduction No. LC-USF33-013311-M5 D1 C



Photo by Russell Lee. Nyssa, Oregon. FSA (Farm Security Administration) mobile camp. Japanese-Americans leaving the camp to work in the fields. 1942. Library of Congress Reproduction No. LC-UJSE33-013306-M2 DI C



Photo by Dorothea Lange. Buttonwillow, Kern County, California. On the land since the cattle days of Miller and Lux. Now cotton district. February 1939. Library of Congress Reproduction No. LC-USF34-018842-E D1 C

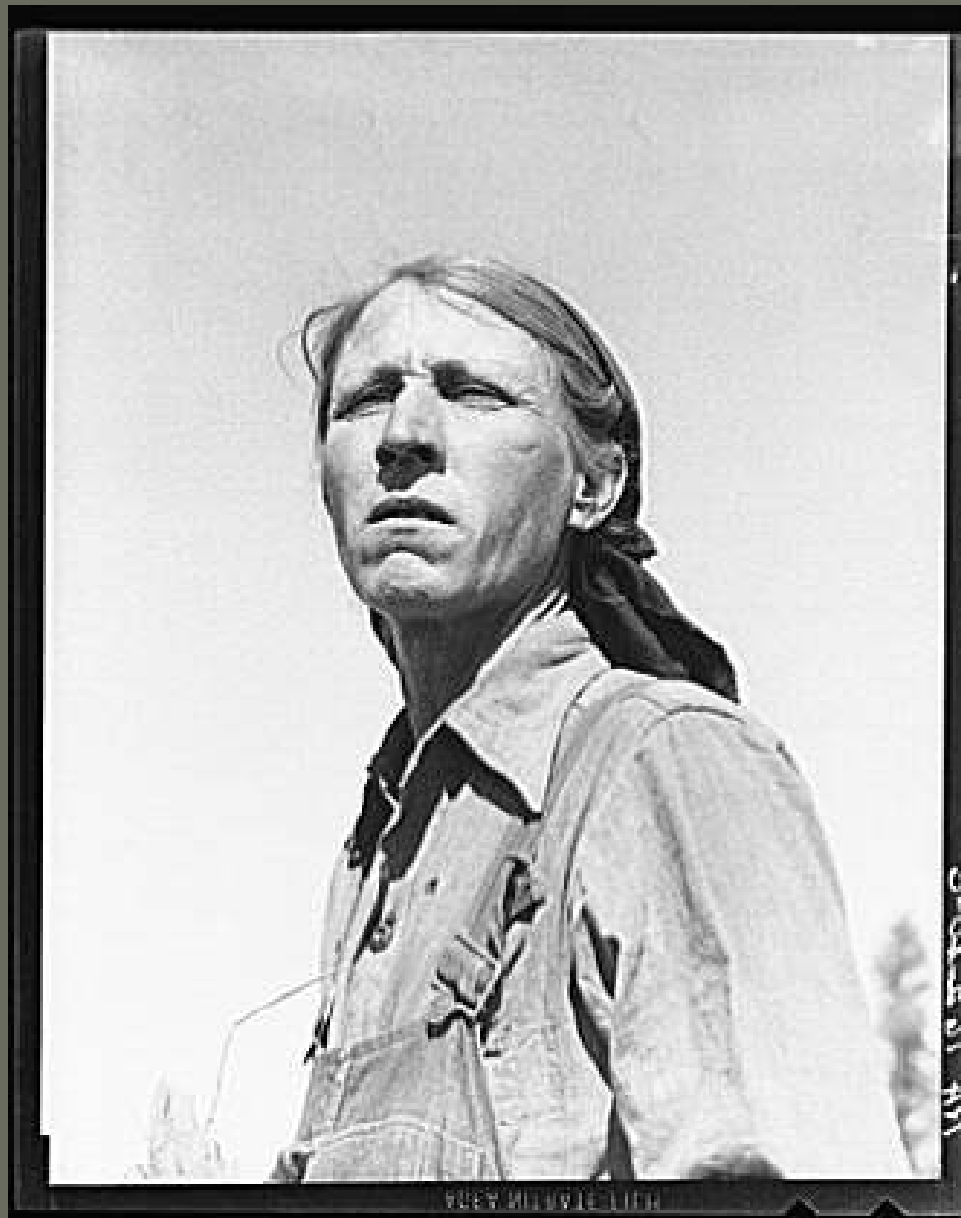


Photo by Dorothea Lange. Drought refugee from Oklahoma in California. March 1937. Library of Congress Reproduction No. LC-USF34-016240-C DLC



Photo by Dorothea Lange. Father of Texas migrant family who follow the cotton crop from Corpus Christi to the Panhandle. June 1937. Library of Congress Reproduction No. LC-USF34-017237-E DLC

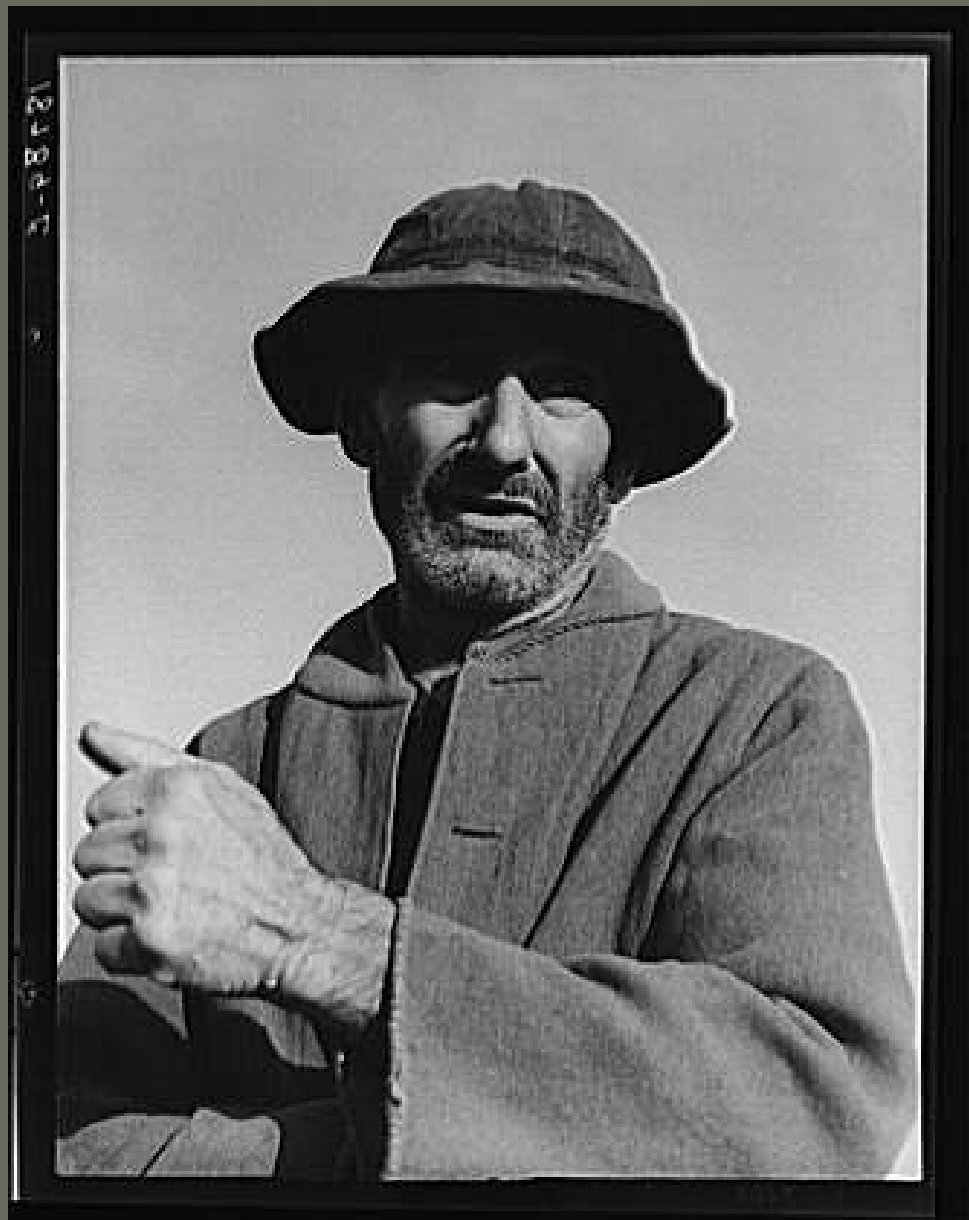


Photo by Dorothea Lange. Firebaugh, California. Came from Webber Falls, Oklahoma with two grown sons in 1938. Cotton pickers. February 1939. Library of Congress Reproduction No. LC-USF34-018789-



Photo by Dorothea Lange. Filipino lettuce field laborer. Imperial Valley CA. 1939. Library of Congress
Reproduction No. LC-USF34-019341-E DLC

LA 10201-3



Photo by Dorothea Lange. Filipino boy of a labor gang cutting cauliflower near Santa Maria, California. 1937.. Library of Congress Reproduction No. LC-USF34-016200-E DLC



Photo by Dorothea Lange. Filipinos cutting lettuce. Salinas, California. 1935. Library of Congress
Reproduction No. LC-DIG-ppmsc-00238 DLC



Photo by Dorothea Lange. Filipino crew of fifty-five boys cutting and loading lettuce. Imperial Valley, California. 1937. Library of Congress Reproduction No. LC-USF34-016204-E DLC



1211-E

Photo by Dorothea Lange. Mexican girl who picks peas for the Eastern market. Imperial Valley, California. February 1939. Library of Congress Reproduction No. LC-USF34-019171-E DLC



21122-D

Photo by Marion Post Wolcott. Migrant vegetable pickers and packinghouse workers. A Filipino's living quarters. Belle Glade, Florida. 1939.. Library of Congress Reproduction No. LC-USF34-051155-D DLC



Photo by Dorothea Lange. Housing for migratory cotton laborers near Casa Grande, Arizona. May 1937.
Library of Congress Reproduction No. LC-USF34-016801-C DLC



Photo by Dorothea Lange. In one of the largest pea camps in California. February 1936 . Library of Congress Reproduction No. LC-USF34-T01-001784-C DLC



Photo by Dorothea Lange. In a migratory labor camp. California. February 1936 . Library of Congress
Reproduction No. LC-USF34-002384-E DLC



Photo by Dorothea Lange. Mexican Family. Brawley County, Imperial Valley, California. June 1935. Library of Congress Reproduction No. LC-USF34-002323-C D1 C



3-025P-PA9

Photo by Dorothea Lange. Mexican field hand. New Mexico. August 1936. Library of Congress
Reproduction No. LC-USF34-009760-E DLC

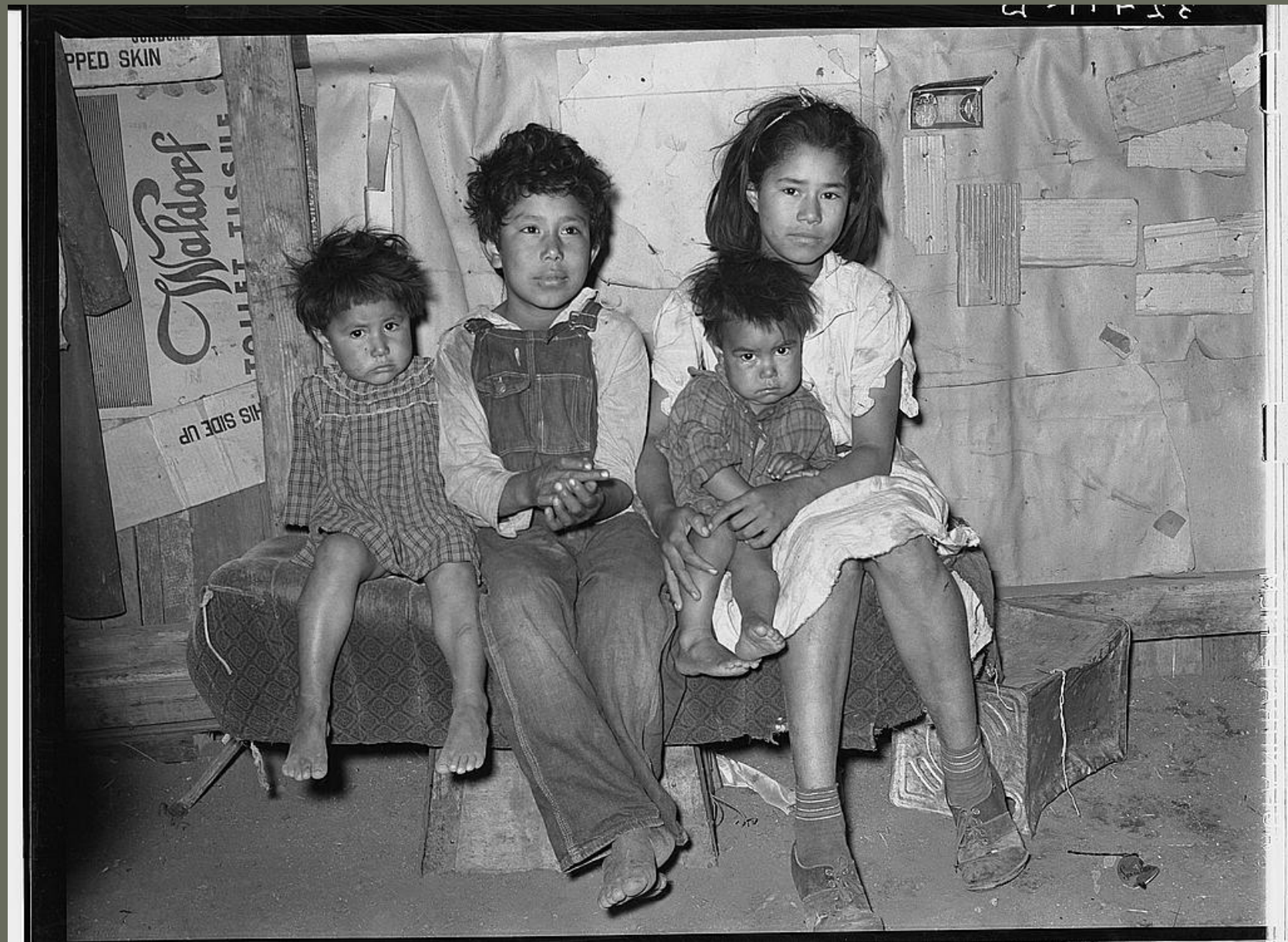


Photo by Russell Lee. Mexican children. San Antonio, Texas. 1939. Library of Congress Reproduction
No. LC-DIG-fsa-8b37356 DLC



Photo by Arthur Rothstein. Mexicans on street corner, Brownsville, Texas. 1942. Library of Congress
Reproduction No. LC-USF33-003673-M3 DLC



2908

Photo by Dorothea Lange. Migrant agricultural workers, idle in town during the potato harvest. Shafter, California. June 1938. Library of Congress Reproduction No. LC-USF34-018229-C DLC



Photo by Dorothea Lange. Migrant worker in camp. California. February 1939. Library of Congress
Reproduction No. LC-USF34-019182-E DLC



Photo by Dorothea Lange. Migratory laborer's wife. Near Childress, Texas. June 1938. Library of Congress Reproduction No. LC-DIG-fsa-8b32424 DLC



Photo by Dorothea Lange. Migratory laborer's wife. Near Childress, Texas. June 1938. Library of Congress Reproduction No. LC-DIG-fsa-8b32434 DLC



LT 19812-E

Photo by Dorothea Lange. Mother and child of flood refugee family, near Memphis, Texas. May 1937.
Library of Congress Reproduction No. LC-DIG-fsa-8b31974 DLC



Photo by Dorothea Lange. Japanese agricultural workers packing broccoli near Guadalupe, California. March 1937. Library of Congress Reproduction No. LC-USZ62-130507 DLC



Photo by Dorothea Lange.. Japanese mother and daughter, agricultural workers near Guadalupe, California. March 1937 Library of Congress Reproduction No. LC-USF34-016129-C DLC

5A 10130-C



Photo by Dorothea Lange. Japanese agricultural workers packing broccoli near Guadalupe, California. March 1937. Library of Congress Reproduction No. LC-USF34-016130-C DLC



1-011 P1

Photo by Dorothea Lange. Nebraska farmer come to pick peas. Near Calipatria, California. Library of Congress Reproduction No. LC-USF34-019190-E DLC



Photo by Dorothea Lange. Occupants--one more home on wheels. California. February 1936 . Library of Congress Reproduction No. LC-USF34-002480-E DLC

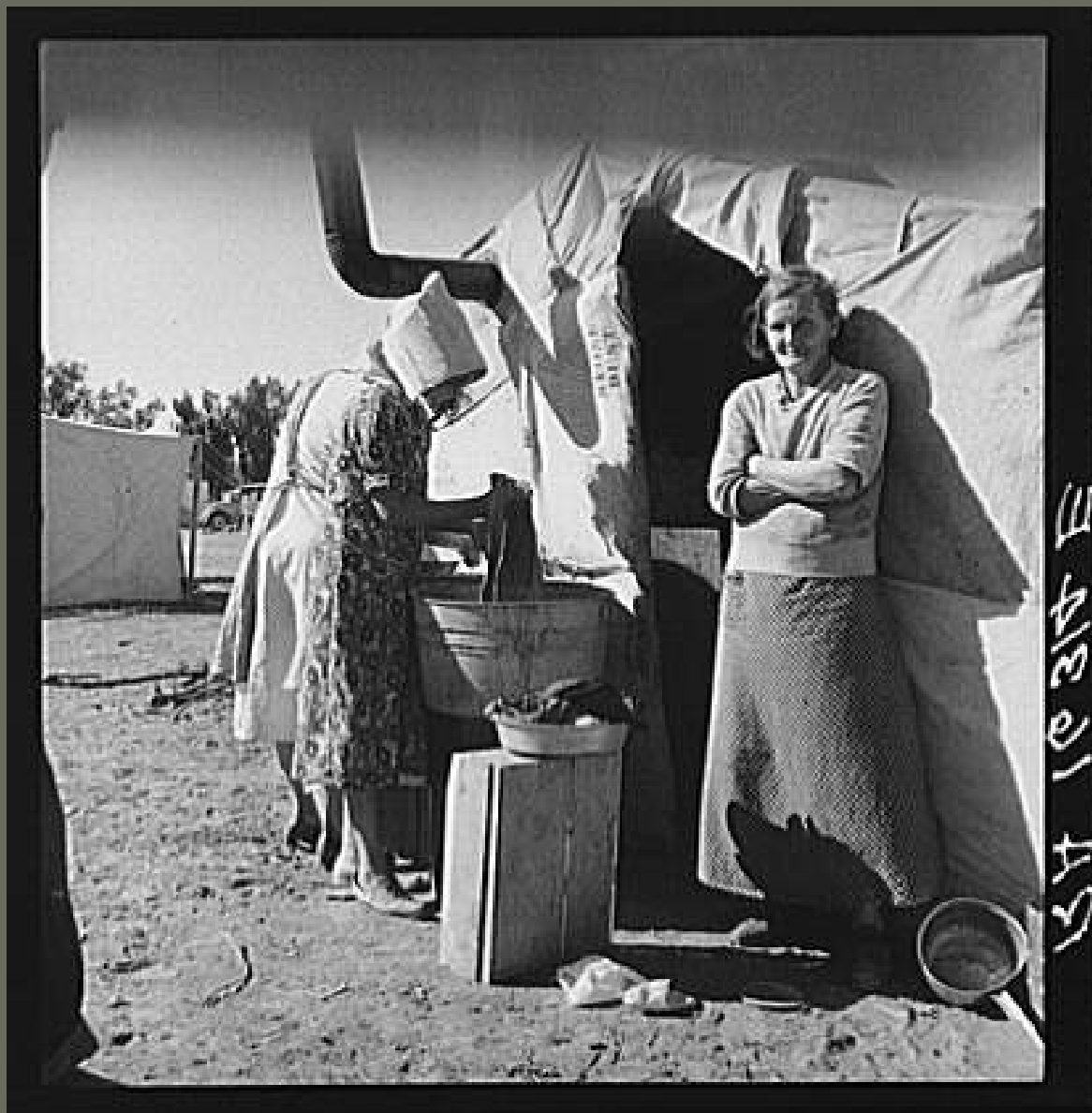


Photo by Dorothea Lange. Oklahomans, drought refugees in a southern California squatter's camp. March 1937. Library of Congress Reproduction No. LC-USF34-016314-E DLC



Photo by Dorothea Lange. Pea picker camp. This family had been farm owners in Oklahoma. Calipatria, Imperial Valley, California. February 1939. Library of Congress Reproduction No. LC-USF34-019136-E



Photo by Dorothea Lange. Young migrant mother with six weeks old baby born in a hospital with aid of FSA. Westley California. April 1939. Library of Congress Reproduction No. LC-USF34-019485-E DLC



Photo by Dorothea Lange. Mother at camp in California. Library of Congress Reproduction No. LC-DIG-fsa-8b34826 DLC



Photo by Dorothea Lange. Squatter camp. California. November 1936. Library of Congress Reproduction No. LC-USF34-009995-C DLC



Photo by Dorothea Lange. Texas tenant farmer in Marysville, California, migrant camp during the peach season. September 1935. Library of Congress Reproduction No. LC-USZ6-1026 D1 C



Photo by Dorothea Lange. Water supply, American River camp, California, San Joaquin Valley. November 1936. Library of Congress
Reproduction No. LC-USF33-015330-M2 DLC



Photo by Russell Lee. Children of migrants, Edinburg, Texas. February 1939. Library of Congress Reproduction No. LC-USF33-012027-M4 DLC

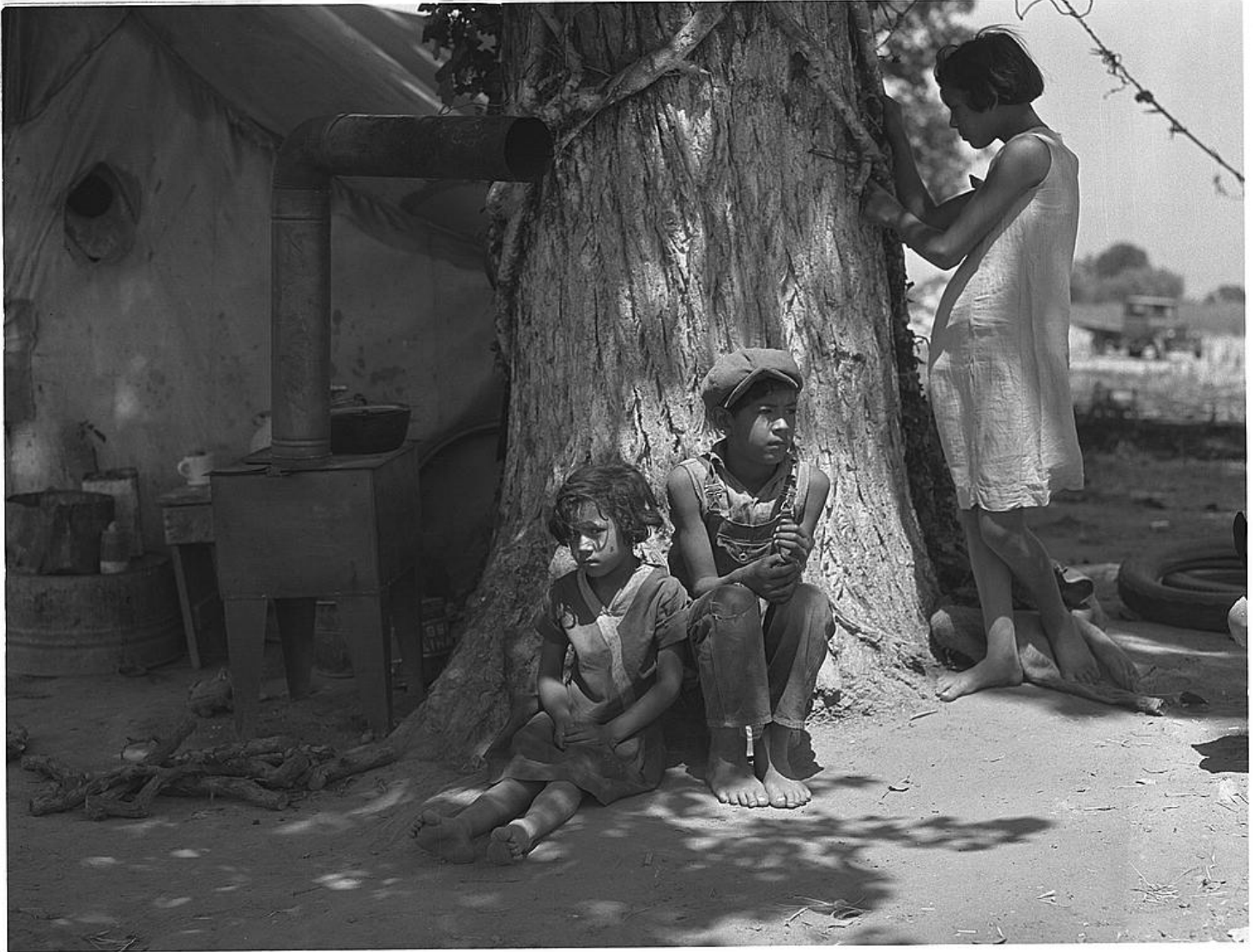


Photo by Dorothea Lange. Motherless migrant children. They work in the cotton. June 1935. Library of Congress Reproduction No. LC-DIG-fsa-8b27002 DLC



Photo by Russell Lee. Mexican woman drawing a bucket of water from backyard well, San Antonio, Texas. 1939. Library of Congress Reproduction No. LC-USF33-012087-M4 DLC



Photo by Russell Lee. Old Spanish-American woman, Taos County, New Mexico. September 1939. Library of Congress Reproduction No. LC-USZ62-64242. M&DLC

Q 9092 117



7

Photo by Arthur Rothstein. Man who once owned the land being used for the White Sands project. Otero County, New Mexico. April 1936. Library of Congress Reproduction No. LC-USF34-002909-D DLC



Photo by Dorothea Lange. United States government camp for migrants. Farmersville. February 1939. Library of Congress Reproduction No. LC-USF34-018915-E DLC

CP 811 124



Photo by Dorothea Lange. Migrant pea pickers camp in the rain. California. February 1936. Library of Congress Reproduction No. LC-USF34-T01-001787-C DLC



Photo by Ben Shahn. Checking in cotton, Little Rock, Arkansas. 1935. Library of Congress Reproduction No. LC-DIG-fsa-8a16149 DLC



Photo by Ben Shahn. Weighing in cotton. Pulaski County, Arkansas. October 1935. Library of Congress Reproduction No. LC-DIG 8a16150v
DLC



Photo by Ben Shahn. Cotton pickers, Pulaski County, Arkansas. October 1935. Library of Congress Reproduction No. LC-DIG-fsa-8a16163
DLC

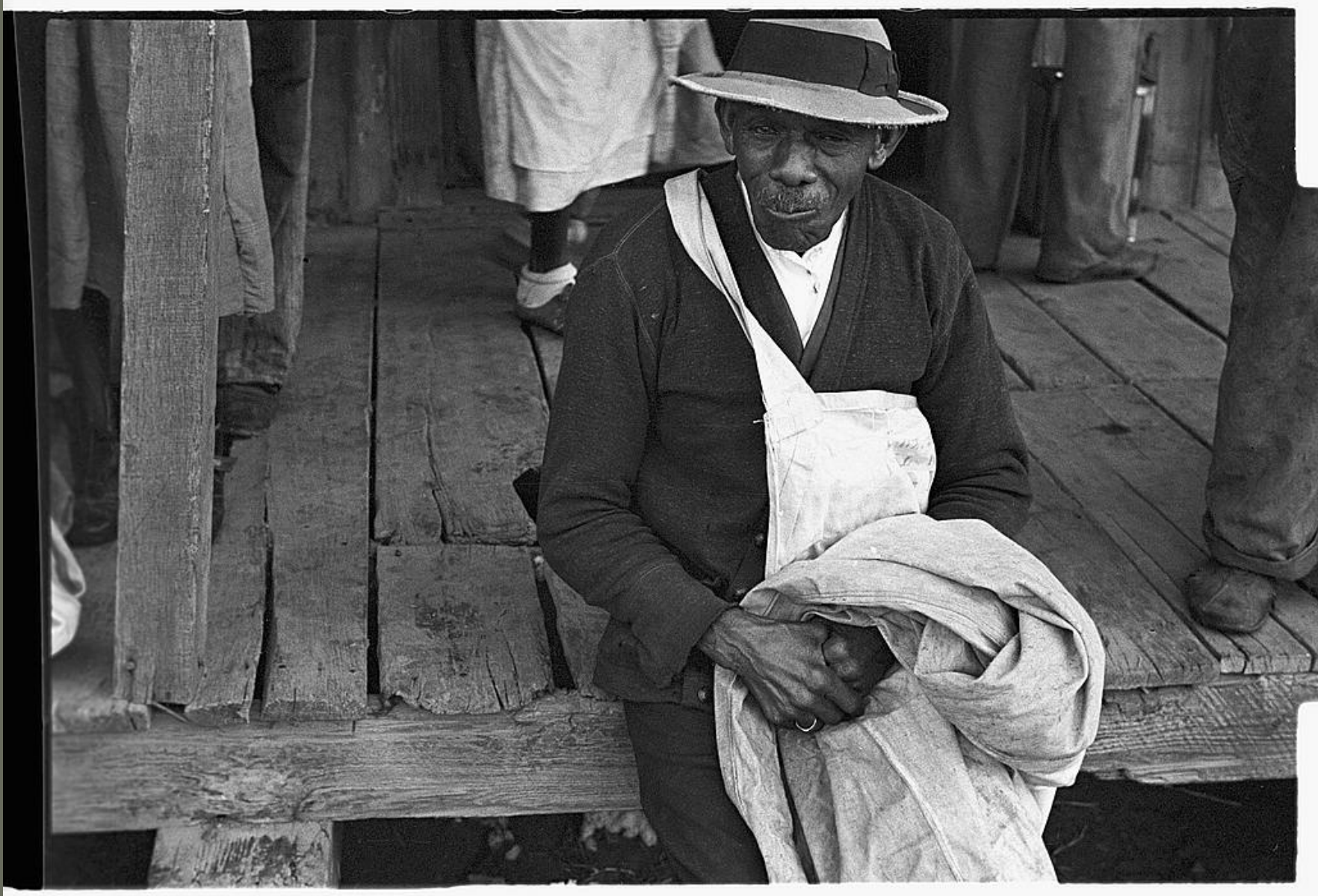


Photo by Ben Shahn. Cotton picker, Arkansas. October 1935. Library of Congress Reproduction No. LC-DIG-fsa-8a16198 DLC



Photo by Ben Shahn. Young cotton picker, Pulaski County, Arkansas. October 1935. Library of Congress Reproduction No. LC-DIG-fsa-8a17065 DLC

Q-5248E



Photo by Russell Lee. Garden and orchard of Chinese farmer. Placer County, California. 1940. Library of Congress Reproduction No. LC-DIG-fsa-8c00547 DLC



Photo by Russell Lee. Fruit farmer and his wife, Placer County, California. 150 acres. Farm is in fair condition. 1940. Library of Congress Reproduction No. LC-USF34-038504-D DLC



Photo by Dorothea Lange. Salinas Valley, California. Large scale, commercial agriculture. 1939. Library of Congress Reproduction No. LC-DIG-fsa-8b32965 DLC



Photo by Dorothea Lange. Colored family from near Houston, Texas. Been in California for two years.
February 1939. Library of Congress Reproduction No. LC-DIG-fsa-8b33148 DLC



Photo by Russell Lee. Vegetables and fruits canned by FSA. September 1939. Library of Congress
Reproduction No. LC-USF34-034275-D DLC



Photo by Dorothea Lange. FSA migrant camp. Westley, California. April 1939. Library of Congress Reproduction No. LC-DIG-fsa-8b33516 DLC



Photo by Dorothea Lange. Grandmother and grandchild. Greenfield, Salinas Valley, California. February 1939. Library of Congress Reproduction No. LC-USF34-019371-E DLC



Photo by Dorothea Lange. Grandmother and grandchild. Greenfield, Salinas Valley, California. April 1939. Library of Congress Reproduction No. LC-USF34-019417-E DLC



Photo by Dorothea Lange. Grandmother from Oklahoma and her pieced quilt. California, Kern County. February 1936. Library of Congress Reproduction No. LC-USF34-T01-001780 DLC



Photo by Ben Shahn. Fiddlin' Bill Henseley... Asheville, North Carolina.. Library of Congress
Reproduction No. LC-DIG-pmsc-00252 DLC



Photo by Russell Lee. Nyssa, Oregon. FSA (Farm Security Administration) mobile camp. A Japanese-American farm laborer selecting a gramophone record in the rec tent. 1942. Library of Congress Reproduction No. LC-

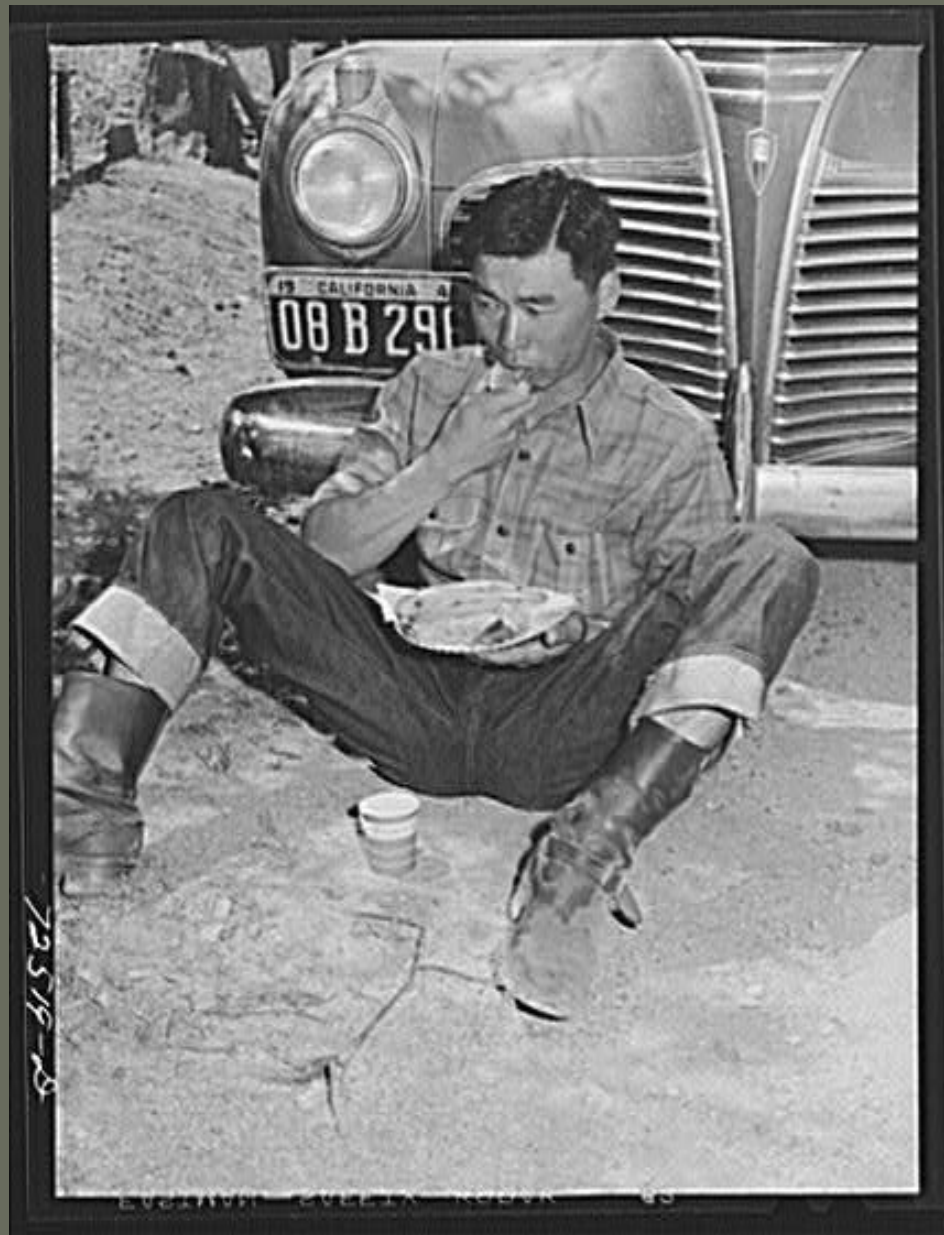


Photo by Russell Lee. San Benito County, California. Japanese-Americans at picnic. 1942. Library of Congress Reproduction No. LC-USF34-072519-D



Photo by Russell Lee. San Benito County, California. Japanese-Americans at picnic. 1942. Library of Congress Reproduction No. LC-USF34-072521-D DLC

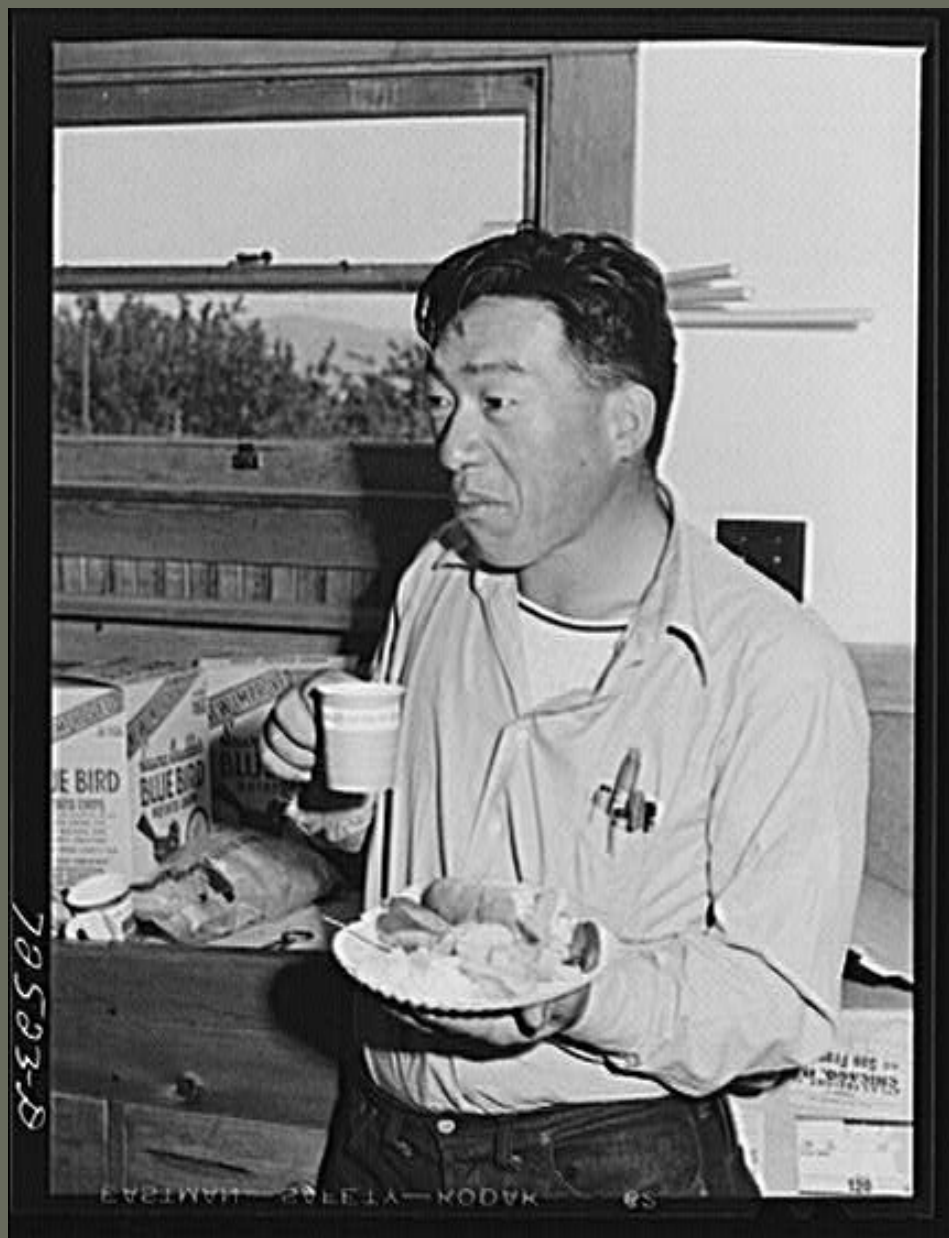


Photo by Russell Lee. San Benito County, California. Japanese-Americans at picnic. 1942. Library of Congress Reproduction No. LC-USF34-072523-D

73607-D



Photo by Russell Lee. Nyssa, Oregon. FSA (Farm Security Administration) mobile camp. Japanese-American children. 1942.. Library of Congress Reproduction No. LC-USF34-073607-D DLC



Photo by Russell Lee. Nyssa, Oregon. FSA (Farm Security Administration) mobile camp. Japanese-American child. 1942. Library of Congress Reproduction No. LC-USF34-073615-D DLC

Negative No.



9126

Photo by Russell Lee. Nyssa, Oregon. FSA (Farm Security Administration) mobile camp. Japanese-Americans play badminton at the camp. 1942. Library of Congress Reproduction No. LC-USZ62-129126

DIC



Photo by Russell Lee. Shelley, Idaho. FSA (Farm Security Administration) mobile camp. Japanese girls playing Chinese checkers. 1942. Library of Congress Reproduction No. LC-USF34-073804-D DLC



Photo by Arthur Rothstein. Wide shot of baseball game in progress. Tulare Migrant Camp. Visalia CA. 1940. Library of Congress Reproduction No. LC-USF34-024144-D DLC



Photo by Arthur Rothstein. Saturday night dance. FSA Tulare Migrant Camp. Visalia, California. 1940.
Library of Congress Reproduction No. LC-USF34-024156-D DLC



Photo by Arthur Rothstein. Audience watching play in recreation hall. Tulare Migrant Camp. Visalia CA. 1940. Library of Congress Reproduction No. LC-USF34-T01-024256-D DLC



Photo by Dorothea Lange. 14 men seated around a table -- Camp Council Meeting. Farmersville CA. May 1939. Library of Congress Reproduction No. LC-USF34-019556-E DLC



Photo by Arthur Rothstein. Cowboys and Indians, schoolchildren, FSA (Farm Security Administration) camp, Weslaco, Texas. 1942. Library of Congress Reproduction No. LC-DIG-fsa-8a13425 DLC

Images in the *Look Book*

courtesy of*

Library of Congress: American Memory

*America from the Great Depression to WWII: Black and
White Photographs from the FSA-OWI 1935-1945*

**Reproduction Numbers have been provided as accurately as possible.*

2nd edition